



2



1



1



D



Description

ROBERT LUFF & CO are delighted to offer for rent a charming cottage situated in the heart of Worthing town center, just a stone's throw away from the seafront. This delightful property boasts a blend of modern comfort and traditional charm, making it an ideal home for those looking to enjoy the best of coastal living.

Upon entering the cottage, you are welcomed through the entrance front door into a bright and inviting reception room leading to a Southerly aspect dining room. The modern fitted kitchen is thoughtfully designed with contemporary fixtures and ample storage, providing an excellent space for culinary endeavors.

Ascending to the first floor, you will find two bedrooms. Each bedroom is designed with comfort in mind, providing space for furnishings and personal touches. The modern contemporary bathroom adds a touch of elegance and convenience.

Externally, the property offers a small charming courtyard garden area, ideal for outdoor living.

Imagine enjoying a bistro-style table and chairs here, creating a perfect setting for al fresco dining on beautiful summer evenings.

Situated in a prime location, this cottage offers easy access to the vibrant amenities of Worthing town center, including shops, restaurants, and the picturesque seafront. With its combination of modern amenities, traditional charm, and prime location, this property is a rare find.

Early viewing is considered essential to fully appreciate the charm and potential of this lovely cottage.

AVAILABLE NOW FOR IMMEDIATE OCCUPATION.

VIEWINGS AVAILABLE 2pm-3pm 16th August 2025



Key Features

- Charming cottage
- Lounge leading onto dining room
- Luxury bathroom
- Courtyard garden
- Modern fitted kitchen
- Two bedrooms
- EPC D energy rating



robertluff.co.uk

30 Guildbourne Centre, Worthing, West Sussex, BN11 1LZ | 01903 331247 | info@robertluff.co.uk

Robert
Luff & Co



robertluff.co.uk

30 Guildbourne Centre, Worthing, West Sussex, BN11 1LZ | 01903 331247 | info@robertluff.co.uk

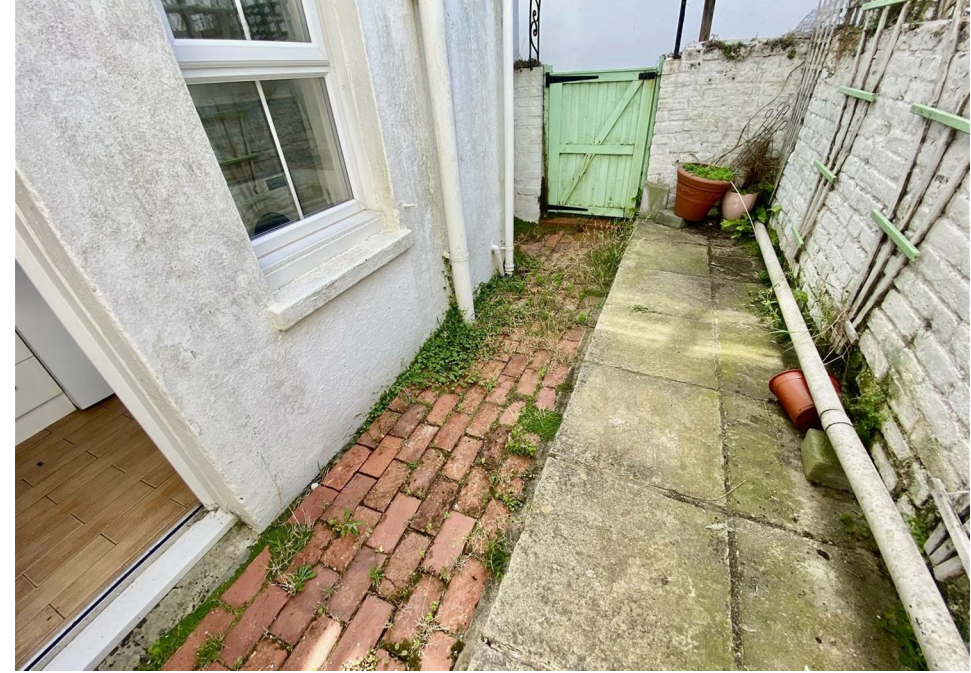
Robert
Luff & Co



robertluff.co.uk

30 Guildbourne Centre, Worthing, West Sussex, BN11 1LZ | 01903 331247 | info@robertluff.co.uk

Robert
Luff & Co



robertluff.co.uk

30 Guildbourne Centre, Worthing, West Sussex, BN11 1LZ | 01903 331247 | info@robertluff.co.uk

Robert
Luff & Co

Floor Plan Western Row



The information provided about this property does not constitute or form any part of an offer or contract, nor may it be regarded as representations. All interested parties must verify accuracy and your solicitor must verify tenure/lease information, fixtures and fittings and, where the property has been extended/converted, planning/building regulation consents. All dimensions are approximate and quoted for guidance only as are floor plans which are not to scale and their accuracy cannot be confirmed. References to appliances and/or services does not imply that they are necessarily in working order or fit for the purpose.